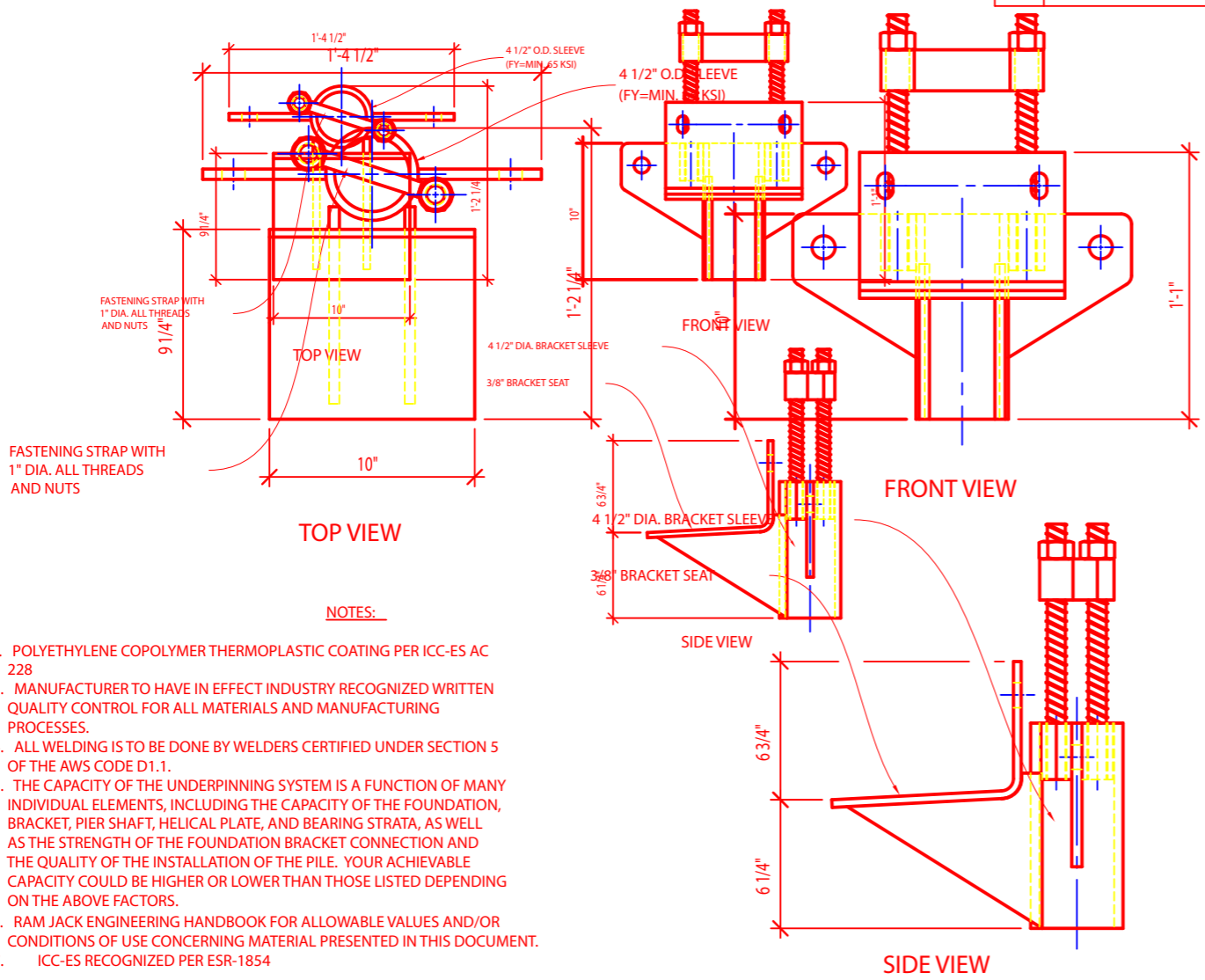


RevNo	Revision note	Date	Signature	Checked



FASTENING STRAP WITH 1" DIA. ALL THREADS AND NUTS

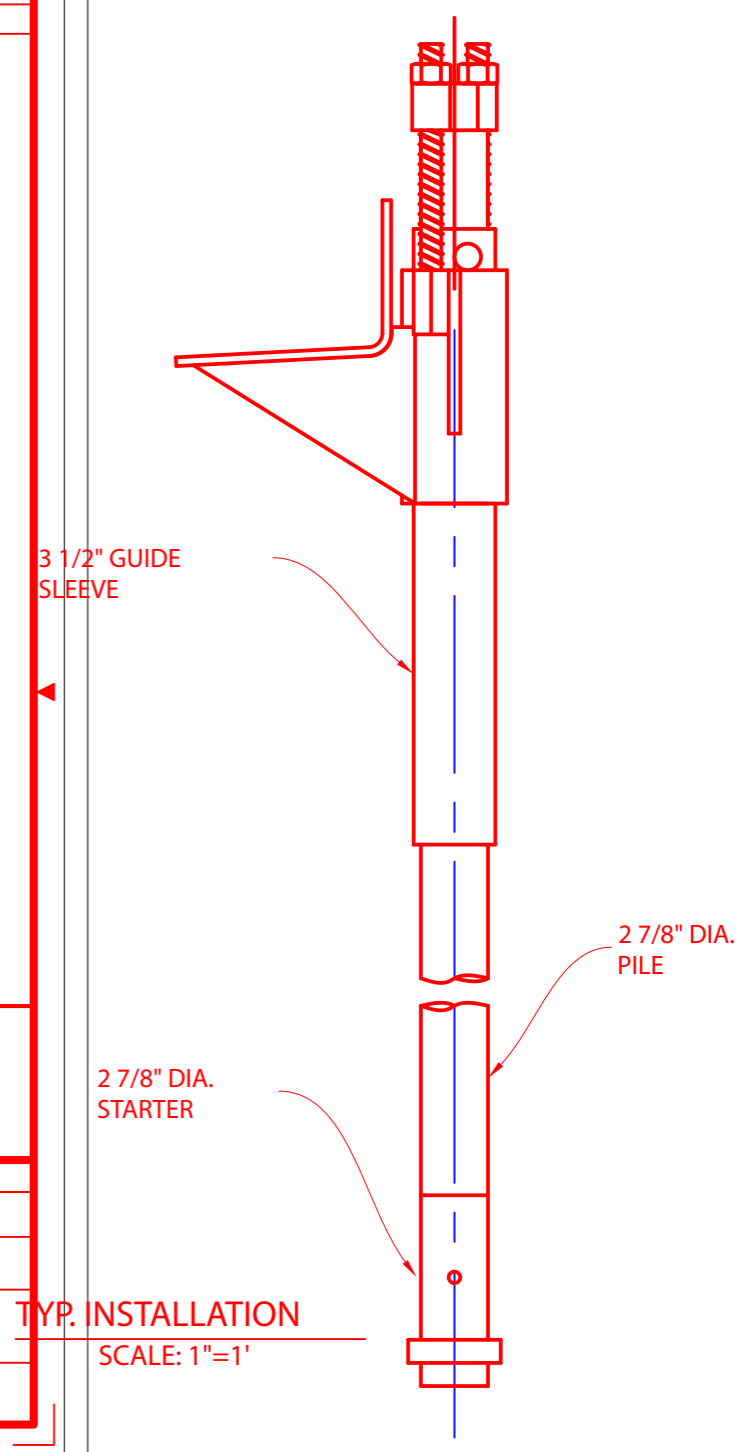
TOP VIEW

NOTES:

1. POLYETHYLENE COPOLYMER THERMOPLASTIC COATING PER ICC-ES AC 228
3. MANUFACTURER TO HAVE IN EFFECT INDUSTRY RECOGNIZED WRITTEN QUALITY CONTROL FOR ALL MATERIALS AND MANUFACTURING PROCESSES.
4. ALL WELDING IS TO BE DONE BY WELDERS CERTIFIED UNDER SECTION 5 OF THE AWS CODE D1.1.
5. THE CAPACITY OF THE UNDERPINNING SYSTEM IS A FUNCTION OF MANY INDIVIDUAL ELEMENTS, INCLUDING THE CAPACITY OF THE FOUNDATION, BRACKET, PIER SHAFT, HELICAL PLATE, AND BEARING STRATA, AS WELL AS THE STRENGTH OF THE FOUNDATION BRACKET CONNECTION AND THE QUALITY OF THE INSTALLATION OF THE PILE. YOUR ACHIEVABLE CAPACITY COULD BE HIGHER OR LOWER THAN THOSE LISTED DEPENDING ON THE ABOVE FACTORS.
6. RAM JACK ENGINEERING HANDBOOK FOR ALLOWABLE VALUES AND/OR CONDITIONS OF USE CONCERNING MATERIAL PRESENTED IN THIS DOCUMENT.
7. ICC-ES RECOGNIZED PER ESR-1854

THIS DRAWING AND ITS CONTENTS ARE CONFIDENTIAL AND THE EXCLUSIVE PROPERTY OF RAM JACK SYSTEMS DISTRIBUTION, LLC. NO PUBLICATION, DISTRIBUTION OR COPIES MAY BE MADE WITHOUT THE EXPRESSED WRITTEN CONSENT OF RAM JACK SYSTEMS DISTRIBUTION, LLC. ALL RIGHTS RESERVED UNDER COPYRIGHT LAWS.

TYP. INSTALLATION
SCALE: 1"=1'



UNLESS OTHERWISE SPECIFIED
* DIMENSIONS ARE IN INCHES
* TOLERANCES: ANGLE ±1°
3 PLACE DECIMALS ±.010
2 PLACE DECIMALS ±.02
* REMOVE ALL BURRS AND SHARP EDGES
* PARENTHEetical INFO FOR REF ONLY

HOLE TOLERANCES					
.013	+.004	.126	+.004	.251	+.005
THRU	-.001	THRU	-.001	THRU	-.001
.125		.250		.500	
.501	+.008	.751	+.010	1.001	+.012
THRU	-.001	THRU	-.001	THRU	-.001
.750		1.000		2.000	

FILE NAME	4021 DRIVEN PILE	FSCM NO	SHEET	1 OF 1	SCALE	1 1/2" = 1'-0"
SIZE	A- SIZE TITLE BLOCK					
DRAWN	CHARLES MARVIN					
CHECK	DARIN WILLIS					
APPR.	DARIN WILLIS					
ISSUED	4021 DRIVEN PILE PILE BRACKET					
REV						
DWG NO	4021-02-07					
CONTRACT NO						