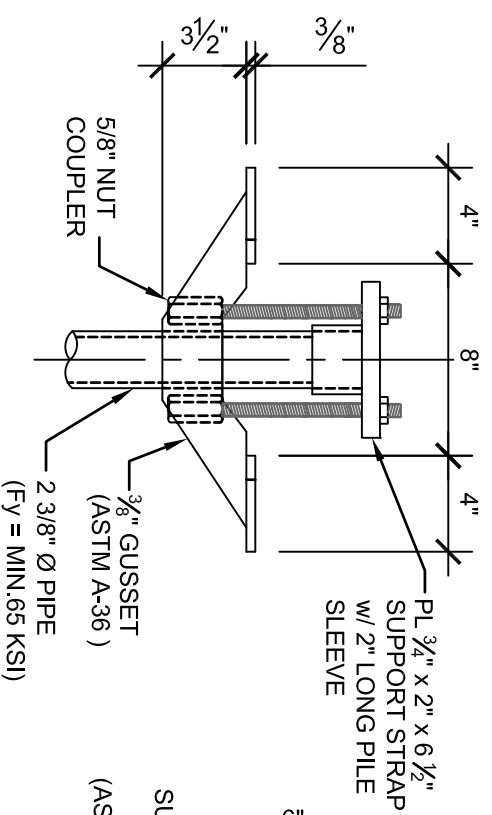
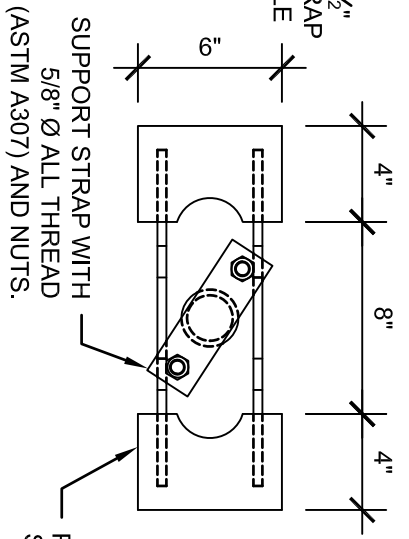


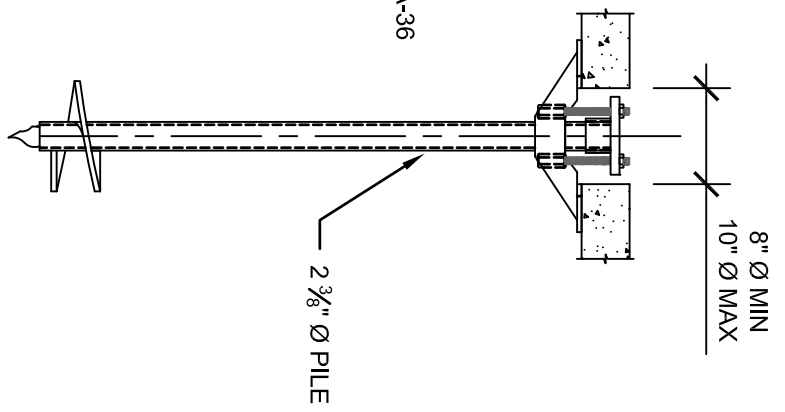
# 4068.LD NON-PIVOT LIGHT DUTY SLAB BRACKET



SIDE VIEW



TOP VIEW



NOTES:

1. POLYETHYLENE COPOLYMER THERMOPLASTIC COATING PER ICC-ES AC 228
2. MANUFACTURER TO HAVE IN EFFECT INDUSTRY RECOGNIZED WRITTEN QUALITY CONTROL FOR ALL MATERIALS AND MANUFACTURING PROCESSES.
3. ALL WELDING IS TO BE DONE BY WELDERS CERTIFIED UNDER SECTION 5 OF THE AWS CODE D1.1.
4. THE CAPACITY OF THE UNDERPINNING SYSTEM IS A FUNCTION OF MANY INDIVIDUAL ELEMENTS, INCLUDING THE CAPACITY OF THE FOUNDATION, BRACKET, PIER SHAFT, HELICAL PLATE, AND BEARING STRATA, AS WELL AS THE STRENGTH OF THE FOUNDATION BRACKET CONNECTION AND THE QUALITY OF THE INSTALLATION OF THE PILE. YOUR ACHIEVABLE CAPACITIES COULD BE HIGHER OR LOWER THAN THOSE LISTED DEPENDING ON THE ABOVE FACTORS.
5. PUNCHING SHEAR AND FLEXURAL STRENGTH OF SLAB MUST BE CHECKED.

TYPICAL INSTALLATION  
DETAIL

ALLOWABLE LOAD CHART		
PART NUMBER	DIAMETER OF PILE	ALLOWABLE LOAD CAPACITY
4068.LD	2 3/8"	7.8 KIIPS



INTERIOR SLAB BRACKET-LD		CATALOG NO. : SEE TABLES		REV. 1
SCALE 1 1/2" = 1'-0"	DRAWN BY SA	DATE: 03/13/2014	SHEET 1 OF 1	