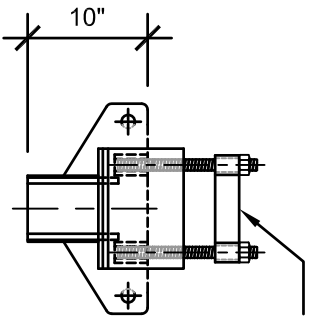
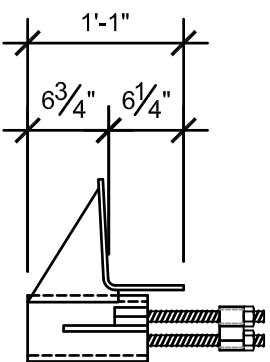


4021.55 BRACKET - 3 1/2" Ø DRIVEN PILE

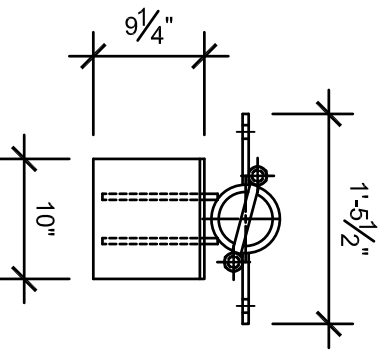
FASTENING STRAP WITH
1 1/2" DIA. ALL THREADS
AND NUTS



FRONT VIEW



SIDE VIEW

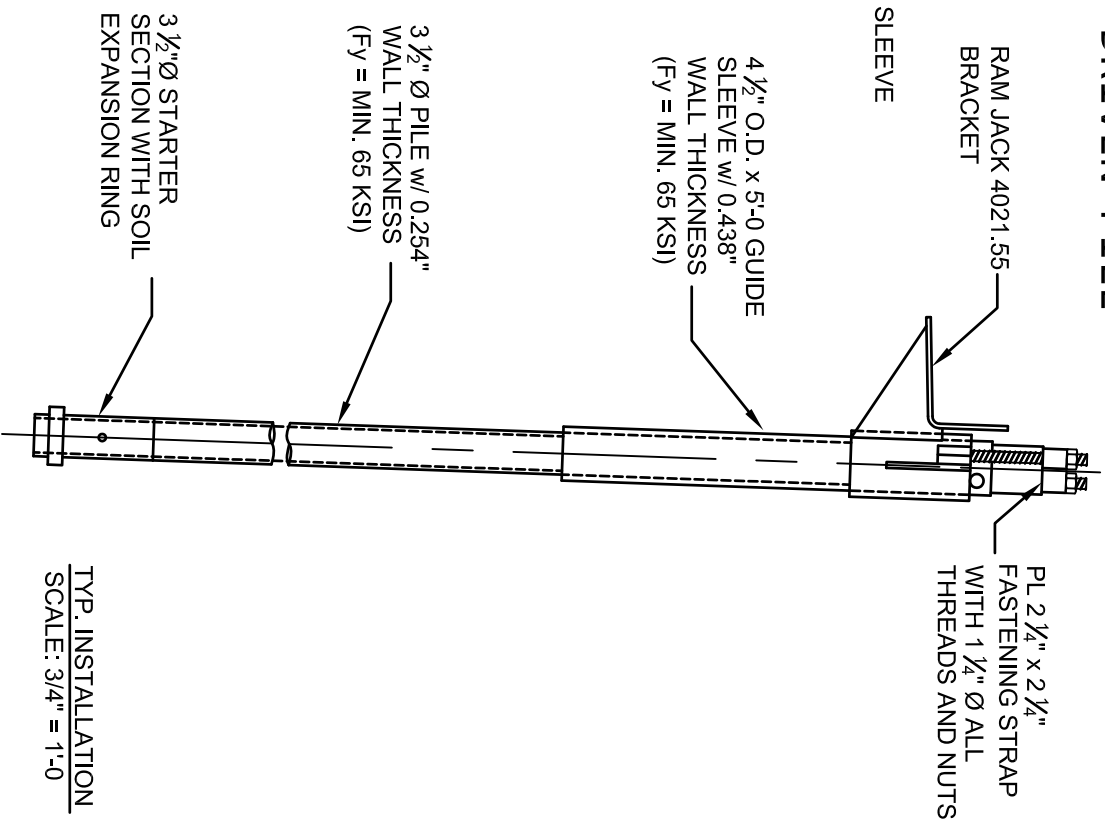


TOP VIEW

| LOAD CHART | |
|---|--------------------|
| ULTIMATE PILE ASSEMBLY CAPACITY | 110,000 LBS |
| ALLOWABLE PILE ASSEMBLY CAPACITY (S.F. = 2) | 55,000 LBS |
| BEARING AREA | 90 IN ² |

NOTES:

1. POLYETHYLENE COPOLYMER THEMOPLASTIC COATING PER ICC-ES AC228.
2. MANUFACTURER TO HAVE IN EFFECT INDUSTRY RECOGNIZED WRITTEN QUALITY CONTROL FOR ALL MATERIALS AND MANUFACTURING PROCESSES.
3. ALL WELDING IS TO BE DONE BY WELDERS CERTIFIED UNDER SECTION 5 OF THE AWS CODE D1.1.
4. THE CAPACITY OF THE UNDERPINNING SYSTEM IS A FUNCTION OF MANY INDIVIDUAL ELEMENTS, INCLUDING THE CAPACITY OF THE FOUNDATION, BRACKET, PIER SHAFT, HELICAL PLATE, AND BEARING STRATA, AS WELL AS THE STRENGTH OF THE FOUNDATION BRACKET CONNECTION AND THE QUALITY OF THE INSTALLATION OF THE PILE. YOUR ACHIEVABLE CAPACITIES COULD BE HIGHER OR LOWER THAN THOSE LISTED DEPENDING ON THE ABOVE FACTORS.



TYP. INSTALLATION
SCALE: 3/4" = 1'-0"

THIS DRAWING AND ITS CONTENTS ARE CONFIDENTIAL AND THE EXCLUSIVE PROPERTY OF RAM JACK SYSTEMS DISTRIBUTION, LLC. NO PUBLICATION, DISTRIBUTION OR COPIES MAY BE MADE WITHOUT THE EXPRESSED WRITTEN CONSENT OF RAM JACK SYSTEMS DISTRIBUTION, LLC. ALL RIGHTS RESERVED UNDER COPYRIGHT LAWS.



RAM JACK

| | | |
|-----------------------|--------------------------|---------------|
| 4021.55 BRACKET | CATALOG NO. : SEE TABLES | REV. 1 |
| SCALE 3/4" = 1'-0" | DRAWN BY DLW | DATE: 08/1/09 |
| | | SHEET 1 OF 1 |