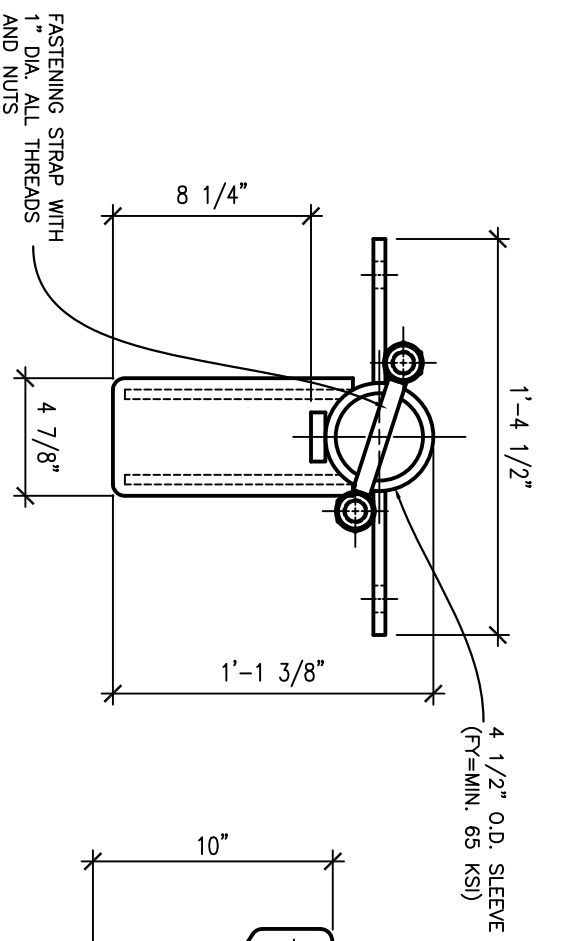
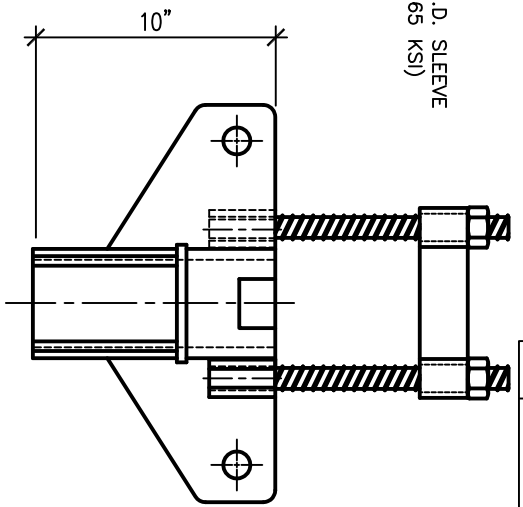


Rev No	Revision note	Date	Signature	Check ed



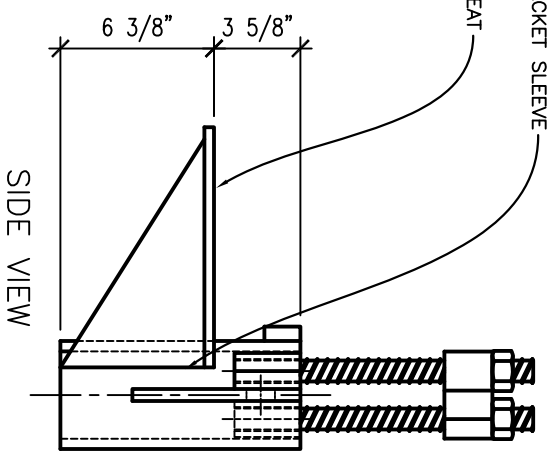
TOP VIEW



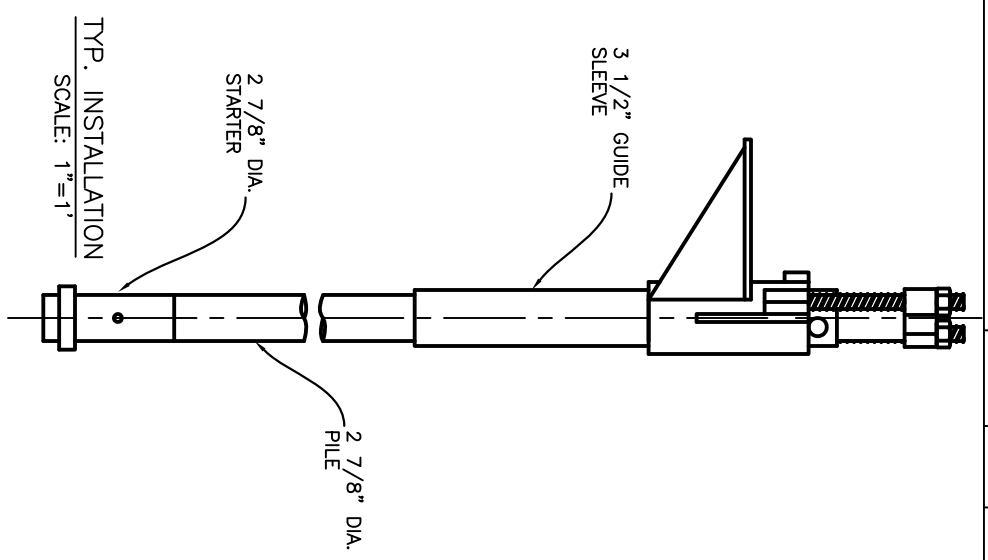
FRONT VIEW

1. POLYETHYLENE COPOLYMER THERMOPLASTIC COATING PER ICC-ES AC 228
3. MANUFACTURER TO HAVE IN EFFECT INDUSTRY RECOGNIZED WRITTEN QUALITY CONTROL FOR ALL MATERIALS AND MANUFACTURING PROCESSES.
4. ALL WELDING IS TO BE DONE BY WELDERS CERTIFIED UNDER SECTION 5 OF THE AWS CODE D1.1.
5. THE CAPACITY OF THE UNDERPINNING SYSTEM IS A FUNCTION OF MANY INDIVIDUAL ELEMENTS, INCLUDING THE CAPACITY OF THE FOUNDATION, BRACKET, PIER SHAFT, HELICAL PLATE, AND BEARING STRATA, AS WELL AS THE STRENGTH OF THE FOUNDATION BRACKET CONNECTION AND THE QUALITY OF THE INSTALLATION OF THE PILE. YOUR ACHIEVABLE CAPACITY COULD BE HIGHER OR LOWER THAN THOSE LISTED DEPENDING ON THE ABOVE FACTORS.
6. RAM JACK ENGINEERING HANDBOOK FOR ALLOWABLE VALUES AND/OR CONDITIONS OF USE CONCERNING MATERIAL PRESENTED IN THIS DOCUMENT.

NOTES:



SIDE VIEW



THIS DRAWING AND ITS CONTENTS ARE CONFIDENTIAL AND THE EXCLUSIVE PROPERTY OF RAM JACK SYSTEMS DISTRIBUTION, LLC. NO PUBLICATION, DISTRIBUTION OR COPIES MAY BE MADE WITHOUT THE EXPRESSED WRITTEN CONSENT OF RAM JACK SYSTEMS DISTRIBUTION, LLC. ALL RIGHTS RESERVED UNDER COPYRIGHT LAWS.



UNLESS OTHERWISE SPECIFIED  
\* DIMENSIONS ARE IN INCHES  
\* TOLERANCES: ANGLE ±1° ± .010  
3 PLACE DECIMALS ± .02  
2 PLACE DECIMALS ± .02  
\* REMOVE ALL BURRS AND SHARP EDGES  
\* PARENTHETICAL INFO FOR REF ONLY

.013	THRU +.004	126	THRU +.004	251	THRU +.006
.125	THRU -.001	.250	THRU -.001	.500	THRU -.001
.501	THRU +.008	.751	THRU +.010	1.001	THRU +.012
.750	THRU -.001	1.000	THRU -.001	2.000	THRU -.001

FILE NAME	FILE NAME	ESCM NO	FSCM NO
SIZE	SIZE		
DRAWN	CHECK	DATE	DATE
APPR.	CHECK	DATE	DATE
ISSUED	ISSUE	DATE	ISSUED
REV	REVISION		
CONTRACT NO	CONTRACT	NO	

SHEET	SCALE
SHEET	SCALE
DESIGN	ACTIVITY
SHEETNAME	DRAWING
DWG NO	SHEETNUMBER-NAME