

CASE STUDY

Historical Museum Project

Horry County, SC

Installer: Ram Jack of South Carolina • Ridgeway, SC • 866.735.3085



Situation: This is a 100 year old building that had been a school, courthouse, and theater. This project was to convert the building to a Historical Museum for Horry County, SC. They wanted to construct a slab that would have a crawl space below it for the interior of the building. For the exterior, they wanted to construct a foundation for a new A/C chiller and front enclosure.



Solution: Ram Jack helical piles installed to 30 kips working load were utilized for deep foundation supports for the new suspended slab. Interior piles had to be installed manually as there was no machine access. Ram Jack helical piles for deep foundation support for the A/C chiller and enclosure were installed with a skid steer.



STRENGTH AND STABILITY

888.332.9909

RAMJACK.COM

TOLL FREE

WEB



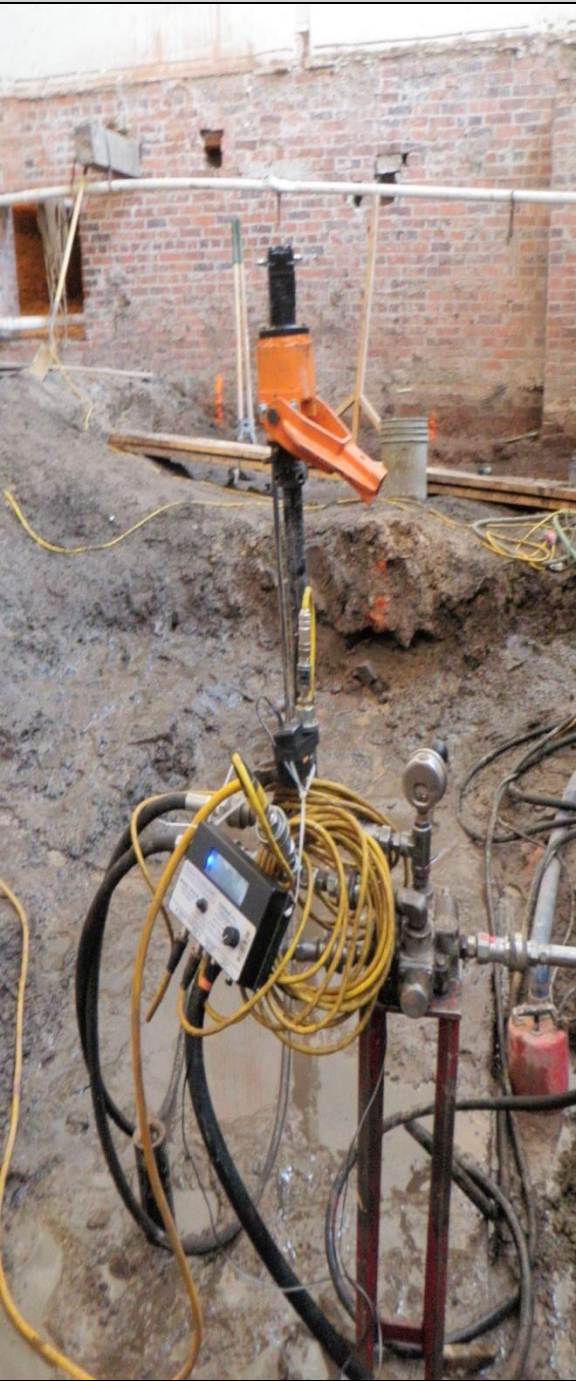
RAMJACK™

CASE STUDY

Historical Museum Project

Horry County, SC

Installer: Ram Jack of South Carolina • Ridgeway, SC • 866.735.3085



Conclusion: The entire project was 167 Ram Jack helical pilings that went 50' - 60' deep. The majority of those were installed manually on the interior (no machine access).

Due to unpredicted access as the job progressed, Ram Jack was required to mobilize many more times to complete the piling installation than originally predicted.

Welch Construction and Horry County were very satisfied with Ram Jack's ability to make unpredictable changes in the work scope as well as the extreme manual stresses sustained by Ram Jack's crew to manually install these piles.

STRENGTH AND STABILITY

888.332.9909

RAMJACK.COM

TOLL FREE

WEB



RAMJACK™